

# 02



## FEBRUARY NEWS:

We are already over half way through the second month of the year, before we know it Easter will be upon us! From all the staff here at Wintec Systems we hope you had a magical Valentines day!

If you have had any changes with staff and/or procedures, we would appreciate a follow up with any new changes that may have happened recently.

### THIS MONTH IN WINTEC NEWS:

- 1 Ultraclad Project (pg 2)
- 2 Monthly Feature (pg 3)
- 3 Coming Soon (pg 4)
- 4 Featured Product (pg 5-6)
- 5 Key Message (pg 7)



## // PHOTOS

Want your work featured? Snap some quality photos of your work and we will feature your images in our next newsletter. Send your snaps to:

[design@wintecsystems.com.au](mailto:design@wintecsystems.com.au)



## // CONTACT

As is the norm with any thriving business, there are often changes with staff and procedures which inevitably result in changes to email addresses, phone numbers etc.. Have we got your current details? We would appreciate your confirmation with your existing details or a follow up with any new changes that may have happened recently. Please send your details to:

[sharon@wintecsystems.com.au](mailto:sharon@wintecsystems.com.au)



The new Aquatic Centre located at Griffith University's Gold Coast campus has been decked out with our UltraClad Shadoline (UA6478).

This vertically installed UltraClad covers approximately 130m<sup>2</sup> has been powder coated in the Dulux Precious Gold Pearl colour.

---

**JOB SITE:** Griffith University, Gold Coast Campus, Parkwood

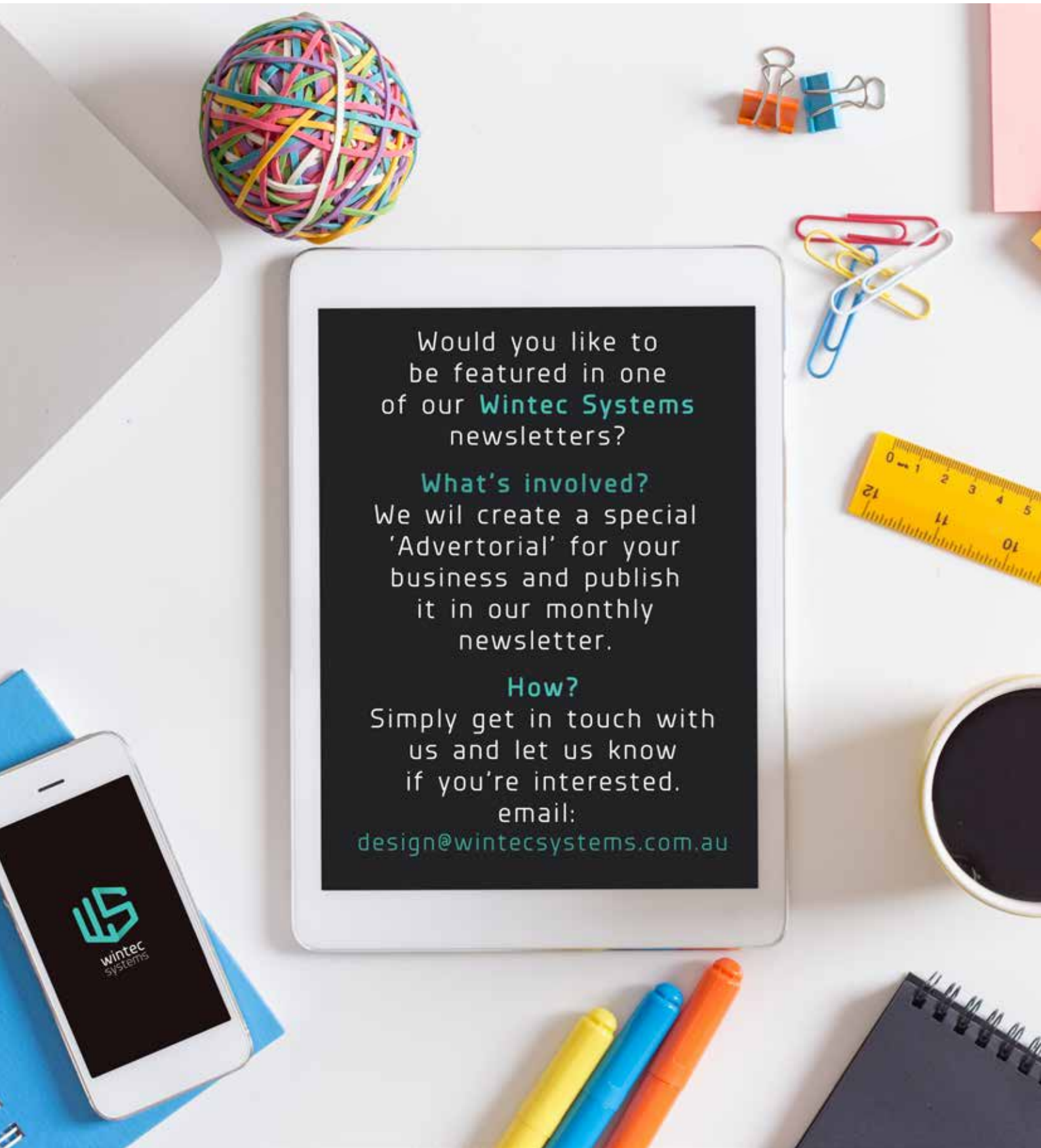
---

**BUILDER:** Gold Coast Metal Roofing Varsity Lakes, QLD, 4227

---

**ARCHITECT:** Conrad, Gargett, Brisbane, QLD, 4000





Would you like to be featured in one of our **Wintec Systems** newsletters?

**What's involved?**

We will create a special 'Advertorial' for your business and publish it in our monthly newsletter.

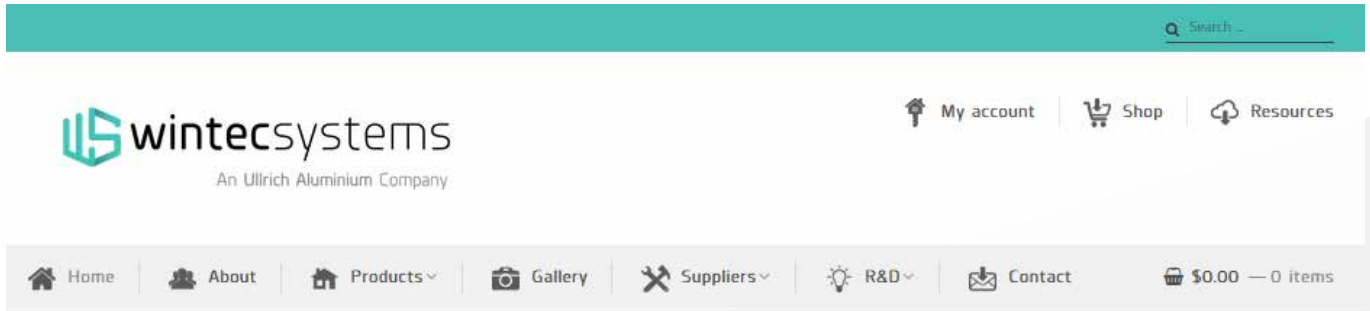
**How?**

Simply get in touch with us and let us know if you're interested.  
email:

[design@wintecsystems.com.au](mailto:design@wintecsystems.com.au)

## Wintec Systems Website Revamp

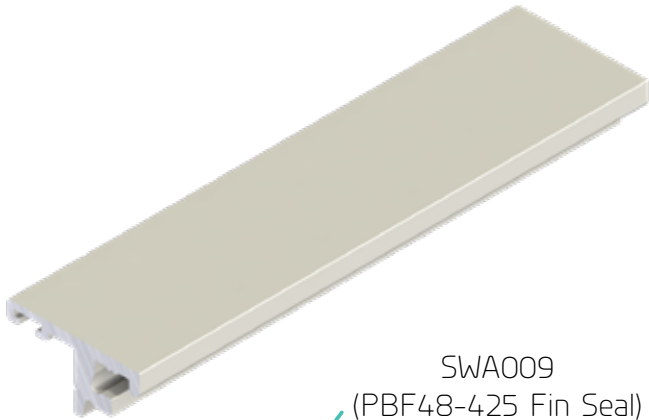
Our new Wintec Systems website is currently in the Beta testing phase and is nearly ready to go live. Here's a sneak peek at the new home page.





## New Profiles

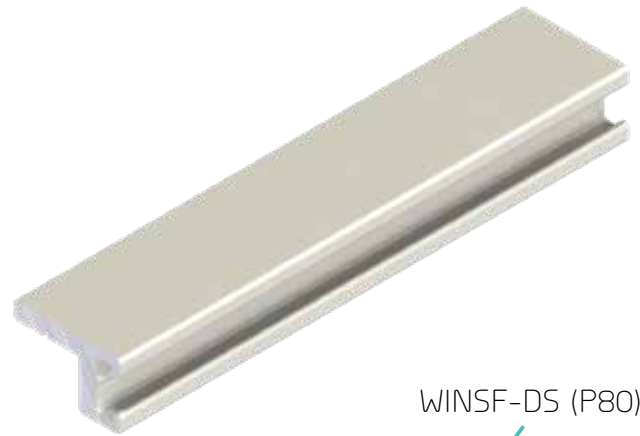
We have added 3 new profiles to our Wintec Systems Harvey Commercial System.



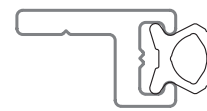
SWA009  
(PBF48-425 Fin Seal)



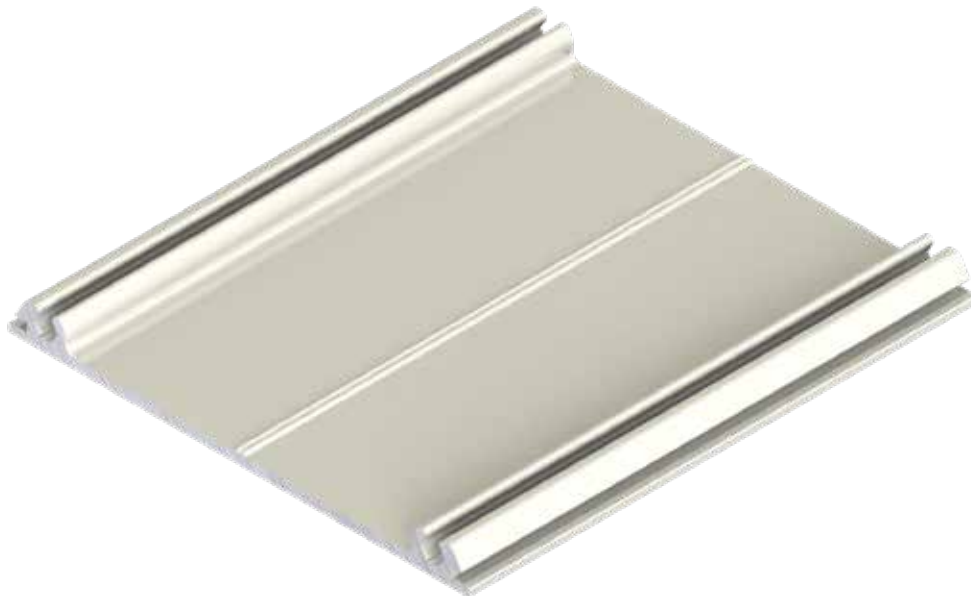
WACD0008  
Door Stop



WINSF-DS (P80)



WASF4020  
Planton Door Stop



WASF4019  
Flat Filler

## Australian Window Association and Australian Glass and Glazing Association have merged



The AWA and AGGA are now one, the merger is complete will be known as AWA-AGGA Limited.

*“The creation of AWA-AGGA Limited has enabled us to access economies of scale, share costs and remove duplication of services, creating a more effective industry association.”*

*“The combined strength of two associations into AWA-AGGA Limited represents the total industry, this enables us to communicate and advocate with a strong, consolidated, consistent voice to our members and all of our stakeholders.”*

*“AWA-AGGA Limited is the peak association representing over 1000 member companies covering window manufacturers, glass manufacturers, glass processors, merchants, glaziers and suppliers of supporting machinery, services and materials. We endorse compliant, sustainable and fit-for-purpose products and provide services to members that support their efforts to operate successfully.”*

AWA-AGGA Limited delivers access to increased expertise for all members and stakeholders in key areas including:

- Technical support
- Training
- Accreditation
- Communication
- Workplace Health and Safety
- Marketing
- Events

Members can now enjoy increased and better member services, expanded technical support, bigger and better events bringing the whole industry together, improved communications, increased access to more training, an expanded and improved accreditation scheme, access to WH&S support, more valuable marketing opportunities, and a revitalised state chapter presence increasing networking opportunities.



